



BASELITE – SCHOOLHOUSE – LED – SPEC SHEET



PROJECT NAME: _____ PROJECT TYPE: _____

MODEL # _____
 A B C D E F G H I
 EXAMPLE: SCP PSTL 41.5 ST18 STC 41.5 12LED 3K LDM120

NOTES: **BABA COMPLIANT**



SCFS/PSTL/41.5/12LED/3K/LDM120

A - SHADES

SCHOOL HOUSE

SKT - 12W(MAX) 8" GLASS

S2R8 - 12W(MAX) 8" GLASS

SCF - 25W(MAX) 12"-16" GLASS 50W(MAX) 18" GLASS

SCFS - 25W(MAX) 12"-16" GLASS 50W(MAX) 18" GLASS

FNF - 25W(MAX) 12"-16" GLASS 50W(MAX) 18" GLASS

FNP - 25W(MAX) 12"-16" GLASS 50W(MAX) 18" GLASS

SCP - 25W(MAX) 12"-16" GLASS 50W(MAX) 18" GLASS

SCPC - 25W(MAX) 12"-16" GLASS 50W(MAX) 18" GLASS

SCPL - 25W(MAX) 12"-16" GLASS 50W(MAX) 18" GLASS

DLP - 25W(MAX) 12"-16" GLASS 50W(MAX) 18" GLASS

B - GLASS OPTIONS

6" FITTER

SCH14, SCO12, SHO14, SHO16, SHO18,

SQO12, SOB12, SOB14, SOB16, SOB18,

PSGN, PSRD, PSTL, PSGY

4" FITTER

PSBL, SQO8, AC, SHC10

4" THREADED FITTER

BAF.PSGN, BAF.PSRD, BAF.PSTL,

BAF.PSBL

C - FINISH OPTIONS

(SEE WEBSITE FOR SWATCH COLORS)

(*SEE NOTES FOR LIMITATIONS*)

14, 15, 16, 17, 18, 19, 19P, 20, 20P,
 20PB, 20SB, 21, 21P, 22, 22P, 23, 23P,
 38, 39, 40, 41, 41.5, 43, 44, 48, 49, 50,
 51, 52, 53, 55, 57, 58, 59, 61, 62, 63,
 78, 80, 81, 82, 85, 86, 87, 89, 91, 92,
 94, 95, 97, 98, 99, 100

D - MOUNTING OPTIONS

LBLC - 8' LED BLACK CORD

LWHC - 8' LED WHITE CORD

LTCHB - 8' CORD, 3' CHAIN, & LOOP

LTCHW - 8' CORD, 3' CHAIN, & LOOP

LCBLC - 8' CORD & CABLE

LCWLC - 8' CORD & CABLE

STXX - STEM (XX=STEM LENGTH)

E - MOUNTING ADD-ONS

LSLC ½" - LED SLOPE CEILING CANOPY ½"

LSTC ½" - LED STEM CANOPY ½"

F - MOUNTING COLOR

*SEE SECTION "C" FOR MOUNTING COLOR
 OPTIONS.

G - LIGHT SOURCE

(SEE SECTION "G" FOR LIGHT SOURCE AND
 WATTAGE OPTIONS)

LIGHT EMITTED DIODE (LED)

12W, 25W, 35W, 50W

H - LED COLOR

(ONLY APPLICABLE FOR LED LIGHT
 SOURCE. SKIP THIS SECTION IF OPTION
 DOES NOT APPLY.)

27K - 2700 KELVIN

3K - 3000 KELVIN

35K - 3500 KELVIN

4K - 4000 KELVIN

5K - 5000 KELVIN

I - ELECTRICAL OPTIONS

(ONLY APPLICABLE FOR LED LIGHT SOURCE. SKIP
 THIS SECTION IF OPTION
 DOES NOT APPLY.)

LED DIMMING OPTIONS

LDM120

LDM277

LDM0-10

NOTES

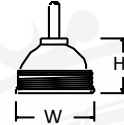
*ACCORDING TO THE LIGHT SOURCE
 THE BACKPLATE MAY VARY IN SIZE.
 (EXAMPLE: LED LIGHT SOURCE WILL
 HAVE A DEEPER BACKPLATE TO HOUSE
 THE DRIVER.)

*FINISH OPTIONS 20, 21, 22, 23 ARE
 FOR SOLID BRASS FIXTURES ONLY

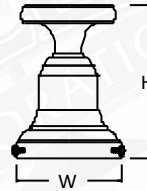
*FINISH OPTIONS 19, 21, 22, 23 ARE AN
 ACID FINISH AND IS APPLIED BY HAND.
 THESE FINISHES WILL VARY IN
 CONSISTENCY.

*FINISH OPTIONS 61 & 62 ARE FINISHED
 WITH A SUPERCHROME ON THE INSIDE
 FOR ALL LED LIGHT SOURCE OPTIONS.

*FIXTURE DIMENSIONS MAY VARY ±
 0.25"



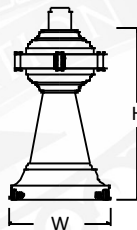
SKT H-3" W-4"



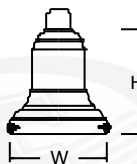
SCF H-8.75" W-6"
 *FLUSH MOUNT, MOUNTING
 OPTIONS DO NOT APPLY



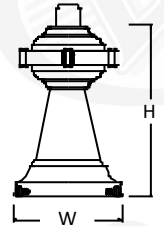
SCFS H-5.75" W-6.25"
 *FLUSH MOUNT, MOUNTING
 OPTIONS DO NOT APPLY



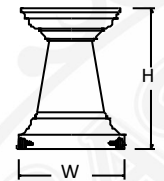
FNP H-10.5" W-6"



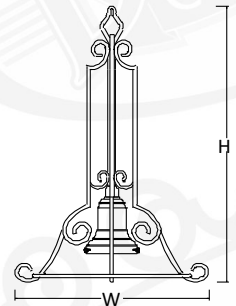
SCP H-6" W-6"



DLP H-10" W-6"



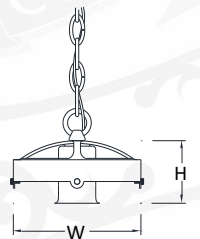
FNF H-7" W-6"
 *FLUSH MOUNT, MOUNTING
 OPTIONS DO NOT APPLY



SCPL H-29.25" W-20.5"



S2R8 H-2.5" W-4.5"



SCPC H-3" W-6"



B – GLASS OPTIONS

*NOTE – THE LIST OF "SHADES" ARE ALL APPLICABLE WITH THE GLASS OPTIONS SHOWN IN THIS SECTION.

6" FITTER SHADES

SCF
SCFS
SCP
SCPC
SCPL
DLP
FNF



SHC14 – 14" CLEAR GLASS



SHO12 – 12" OPAL GLASS

SHO14 – 14" OPAL GLASS

SHO16 – 16" OPAL GLASS

SHO18 – 18" OPAL GLASS



SQO12 – 12" SQUARE OPAL GLASS



SOB12 – 12" SLANT OPAL GLASS

SOB14 – 14" SLANT OPAL GLASS

SOB16 – 16" SLANT OPAL GLASS

SOB18 – 18" SLANT OPAL GLASS



PSGN
12" OPAL GLASS
WITH LIME GREEN AND BLACK
PINSTRIPE HAND-PAINTED LINES



PSRD
12" OPAL GLASS
WITH RED-ORANGE AND BLACK
PINSTRIPE HAND-PAINTED LINES



PSTL
12" OPAL GLASS
WITH TEAL AND BLACK
PINSTRIPE HAND-PAINTED LINES



PSGY
12" OPAL GLASS
WITH GREY PINSTRIPE
HAND-PAINTED LINES

*NOTE – THE LIST OF "SHADES" ARE ALL APPLICABLE WITH THE GLASS OPTIONS SHOWN IN THIS SECTION. FOR LED OPTION 12W MAX.

4" FITTER SHADES

FNF
FNP
S2R8



PSBL
8" OPAL GLASS
WITH NAVY BLUE AND BLACK
PINSTRIPE HAND-PAINTED LINES



SQO8
8" SQUARE
OPAL GLASS



AC
7" CLEAR TEXTURED
ACORN GLASS



SHC10
10" CLEAR GLASS

*NOTE – THE LIST OF "SHADES" ARE ALL APPLICABLE WITH THE GLASS OPTIONS SHOWN IN THIS SECTION. FOR LED OPTION 12W MAX.

4" THREADED FITTER SHADES

SKT



BAF.PSGN
8" OPAL GLASS
WITH LIME GREEN PINSTRIPE
HAND-PAINTED LINES



BAF.PSRD
8" OPAL GLASS
WITH RED-ORANGE PINSTRIPE
HAND-PAINTED LINES



BAF.PSTL
8" OPAL GLASS
WITH TEAL PINSTRIPE
HAND-PAINTED LINES



BAF.PSBL
8" OPAL GLASS
WITH NAVY BLUE PINSTRIPE
HAND-PAINTED LINES



D - MOUNTING OPTIONS

STEM MOUNTS

*STEMS RATED FOR DAMP LOCATION

*CANOPY NOT INCLUDED, ADD IN SECTION D

*AVAILABLE MODELS FOR THE ¼" STEM OPTION

SKT
S2R8



ST(XX) STEM MOUNT - ¼" NPT
XX = LENGTH OF STEM
(EXAMPLE – "ST18" = STEM MOUNT 18" LENGTH)
*CANOPY NOT INCLUDED, ADD IN SECTION E

*AVAILABLE MODELS FOR THE ½" STEM OPTION

SCP
DLP
FNP



ST(XX) STEM MOUNT - ½" NPT
XX = LENGTH OF STEM
(EXAMPLE – "ST18" = STEM MOUNT 18" LENGTH)
*CANOPY NOT INCLUDED, ADD IN SECTION E

CORD MOUNTS

FOR LED OPTIONS, CANOPIES WILL VARY IN SIZE DUE TO SIZE OF THE DRIVER THAT WILL BE LOCATED INSIDE OF THE CANOPY. *CORDS RATED FOR DRY LOCATION *CANOPY DIMENSIONS: 4" (H) 5.5" (W)

*AVAILABLE MODELS FOR LED CORD OPTION

SCP
SKT
S2R8



LBLC 8' BLACK CORD (INCLUDES LED CANOPY)
LWHC 8' WHITE CORD (INCLUDES LED CANOPY)



LTCHB 8' BLACK CORD, 3' CHAIN, and LOOP
LTCHW 8' WHITE CORD, 3' CHAIN, and LOOP
*MUST USE FOR 18" GLASS OPTION

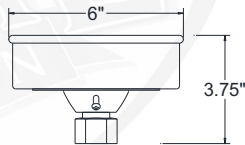


LCBLC 8' BLACK CORD and CABLE
LCWHC 8' WHITE CORD and CABLE
*MUST USE FOR 18" GLASS OPTION

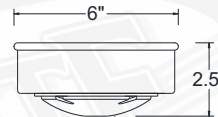
E - MOUNTING ADD-ONS

STEM ADD-ONS

* FOR LED OPTIONS, CANOPIES WILL VARY IN SIZE DUE TO SIZE OF THE DRIVER THAT WILL BE LOCATED INSIDE OF THE CANOPY.



LSLC ½" LED SLOPE CEILING CANOPY ½"
*(Slopes To 20 Degrees)



LSLC ½" LED STEM MOUNT CANOPY ½"

G – LIGHT SOURCE

BASELITE'S PUBLISHED LUMINAIRE PHOTOMETRIC TESTING WAS PERFORMED IN A 3-METER INTEGRATING SPHERE USING THE 4TT GEOMETRY METHOD. DATA IS CONSIDERED TO BE REPRESENTATIVE OF THE CONFIGURATIONS SHOWN, WITHIN THE TOLERANCES ALLOWED BY LIGHTING FACTS.

LIGHT EMITTING DIODE (LED)

LED 12W (MAX)- SKT, S2R8 (WITH 8" GLASS)

LED 25W (MAX) - SCF, SCFS, FNF, FNP, DLP, SCPL, SCPC, SCP
(WITH 12"-16" GLASS)

LED 50W (MAX) - SCF, SCFS, FNF, FNP, DLP, SCPL, SCPC, SCP
(WITH 18" GLASS)

***IMPORTANT – FOR LIGHT EMITTED DIODE (LED) LIGHT SOURCE OPTION, FIXTURES ARE LIMITED DUE TO SIZE OF THE FIXTURE AND THE CORD WATTAGERESTRICTIONS. PLEASE SEE AVAILABILITY CHART TO THE RIGHT. EXAMPLE: /LED25W/**

OPTION	WATTAGE	LUMENS	CRI	VOLTAGE	DIMMING
LED12W	12W	1481	>90	120-277 VAC	SEE SECTION "F"
LED25W	25W	2812	>90	120-277 VAC	SEE SECTION "F"
LED35W	35W	3743	>90	120-277 VAC	SEE SECTION "F"
LED50W	50W	5750	>90	120-277 VAC	SEE SECTION "F"
@3500K					



I – ELECTRICAL OPTIONS

MOST BASELITE'S ELECTRICAL OPTIONS ARE ONLY COMPATIBLE FOR CERTAIN FIXTURES. PLEASE SEE NOTES BELOW AND FOR FURTHER DETAILS CONTACT THE FACTORY.

LED DIMMING OPTIONS

FOR TRIAC OR 0-10V OPTOIN CHOOSE FROM THE FOLLOWING. CONTACT DRIVER MANUFACTURER FOR SPECIFICATIONS.

LDM120 - TRIAC DIMMING AT 120 VOLT

LDM277 - TRIAC DIMMING AT 277 VOLT

LDM0-10V – 0 – 10v