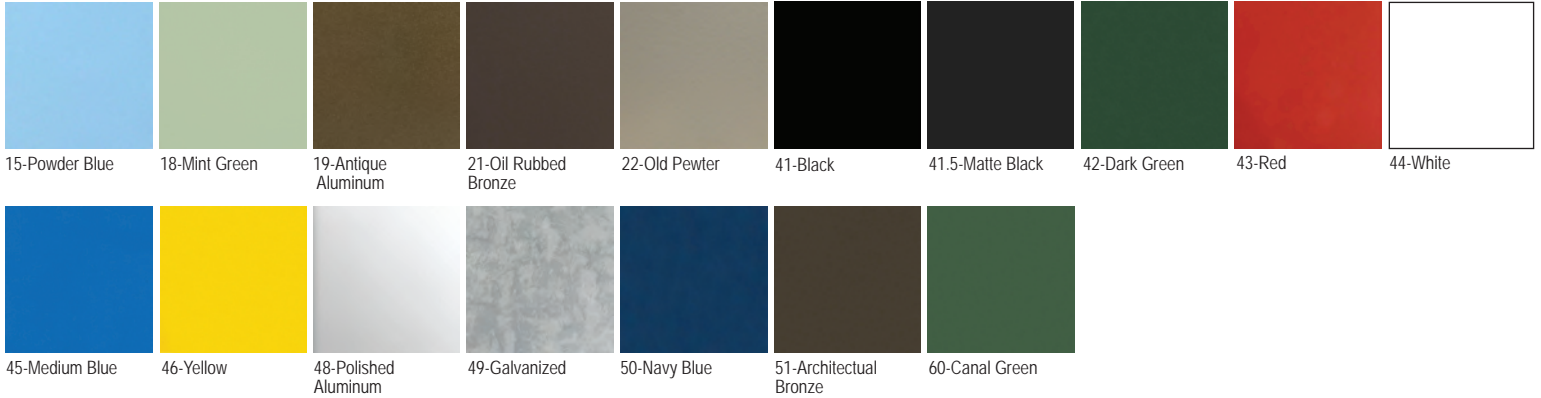


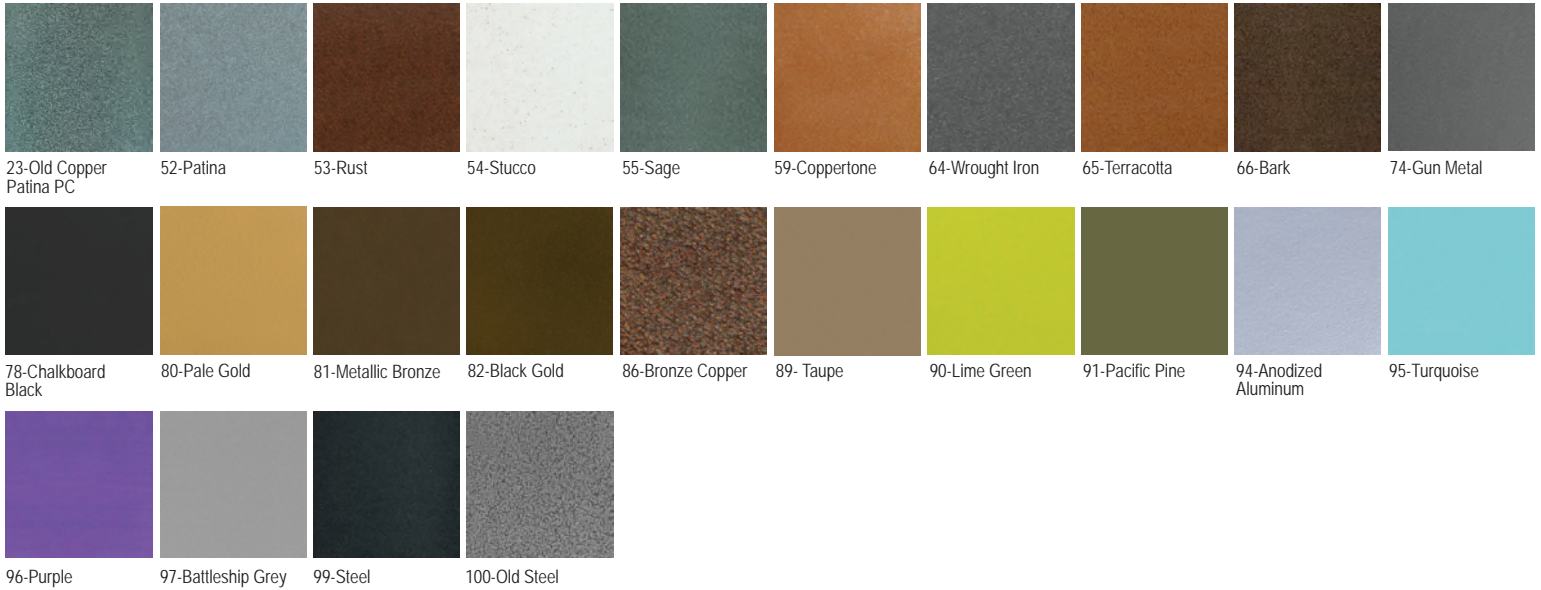


POWDER COAT & METAL FINISH OPTIONS

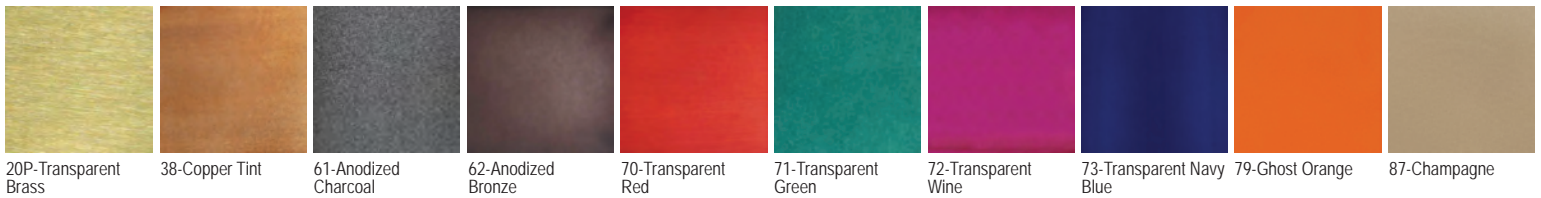
BASIC POWDER COAT



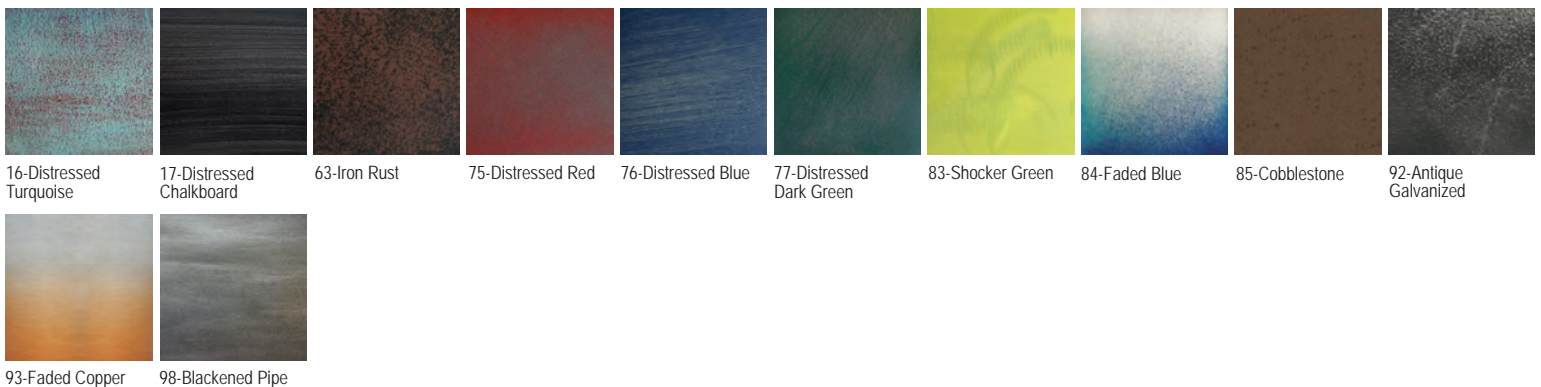
BASIC UPGRADED POWDER COAT



TWO - COAT POWDER COAT



SPECIALTY POWDER COAT





POWDER COAT & METAL FINISH OPTIONS

ACID DIP

- Acid finishes are applied by hand and consistency will vary on each application.



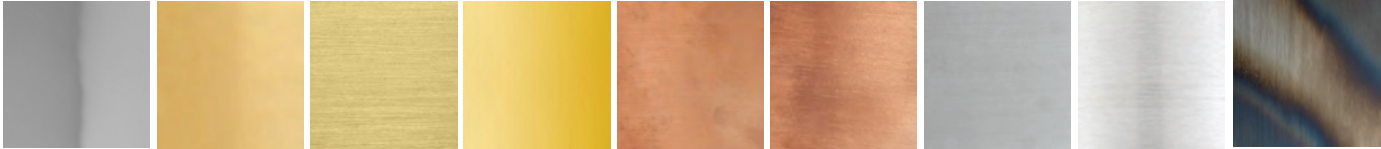
19A-Antique Aluminum

21A-Oil Rubbed Bronze

22A-Old Pewter

23A-Old Copper Patina

METAL FINISH



14PN-Polished Nickel

20-Raw Brass

20SB-Satin Brass

20PB-Polished Brass

39-Raw Copper

40-Copper with Clear Coat

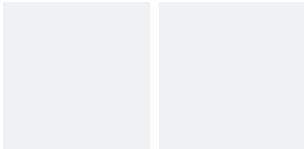
57-Polished Alum. Clear Coat

58-Satin Aluminum

88-Flamed Steel

ADDITIONAL TOP COAT

- Ghost matte and Marine grade clear coats are an additional cost and will change the appearance of the bottom powder coat color.



G - Ghost Matte Clear Coat

MG - Marine Grade Clear Coat

SPECIFICATIONS

- Finish options that are the same color inside and out of the shade - 19(A), 20, 20PB, 20SB, 20P, 21(A), 22(A), 23(A), 38, 39, 40, 48, 49, 54, 57, 58, 61, 62, 63, 64, 65, 66, 70, 71, 72, 73, 78, 83, 84, 88, 92, 93, 98
- Finish options with a white powder coat inside of the shade - 14, 18, 19P, 21P, 22P, 41, 41.5, 42, 43, 44, 45, 46, 50, 51, 52, 53, 55, 59, 60, 74, 75, 76, 77, 79, 80, 81, 82, 85, 86, 87, 89, 90, 91, 94, 95, 96, 97, 99, 100
- All fixtures 10" and smaller come with the same color inside and out of the shade.
- Finish option 88 is only available with certain shades, call for further information.
- All finish options except "basic" and "basic upgrade" are considered premium finish options and lead times will be longer.
- Finish options - 59, 61, 62, 70, 71, 72, 73 are all finished with superchrome on the inside of the shade when LED light source is selected.
- These color swatches are representative only and may vary in color and texture
- G & MG - ghost matte and marine grade top coats can be applied to any finish and is an additional fee.